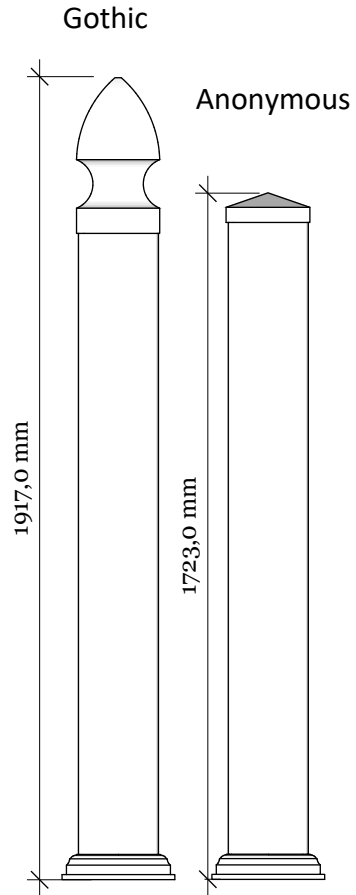
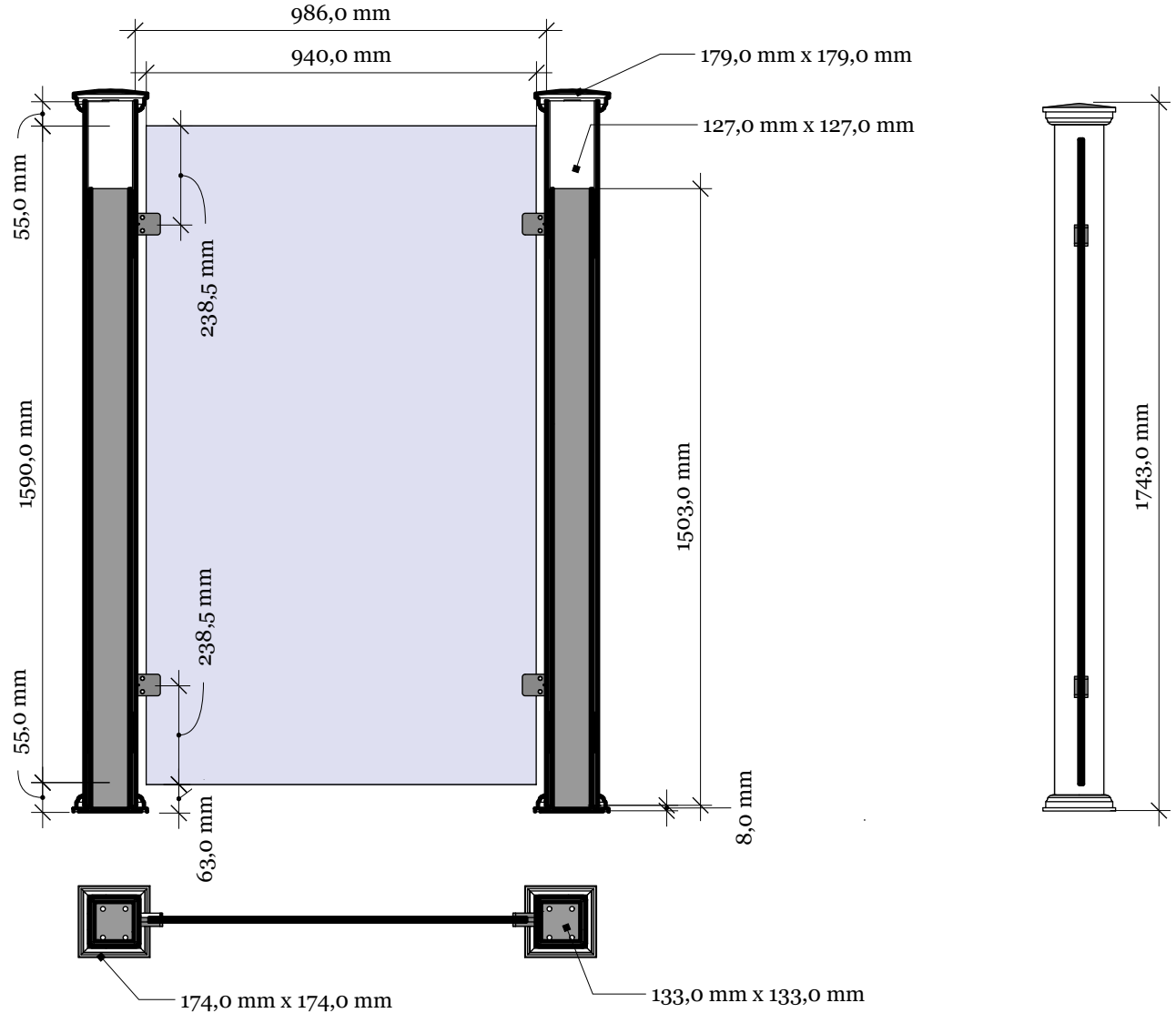


Alternative top caps

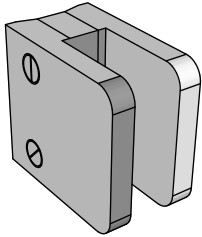


KG-3 Utsyn 170 with New England top



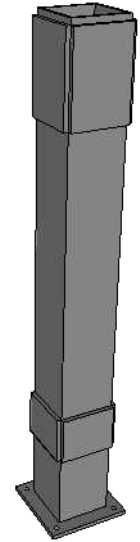
Revisions		
	MM/DD/YY	Notes
1	14/11/17	Sheet Production - RL
2	06/10/20	Name definition, and layout update - MS
3	10/02/21	Layout update - LMS
4	___/___/___	...
5	___/___/___	...

Stainless clamps  
for 16-18mm glass

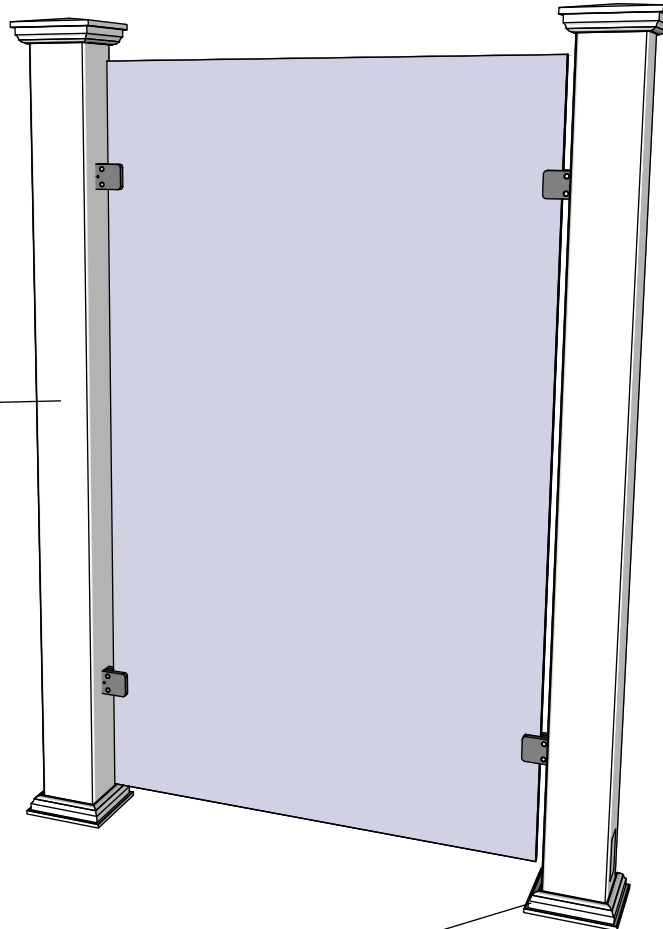


## KG-3 Utsyn 170 with New England top

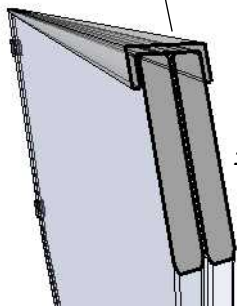
Rigid aluminum  
insert in post



post  
127mm x 127mm.



U-Profile

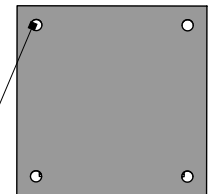


16,72 mm tempered and laminated glass

Bottom cover  
174mm x 174mm.

Bottom of insert is  
150mm x 150mm.  
10mm thickness of alu.

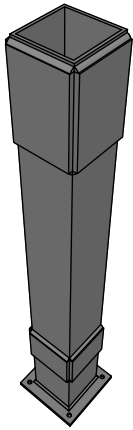
Dia = 9mm



Revisions

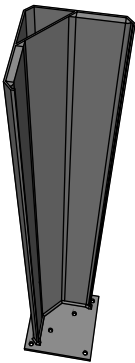
	MM/DD/YY	Notes
1	14/11/17	Sheet Production - RL
2	06/10/20	Name definition, and layout update - MS
3	10/02/21	Layout update - LMS
4	--/--/--	...
5	--/--/--	...

Standard



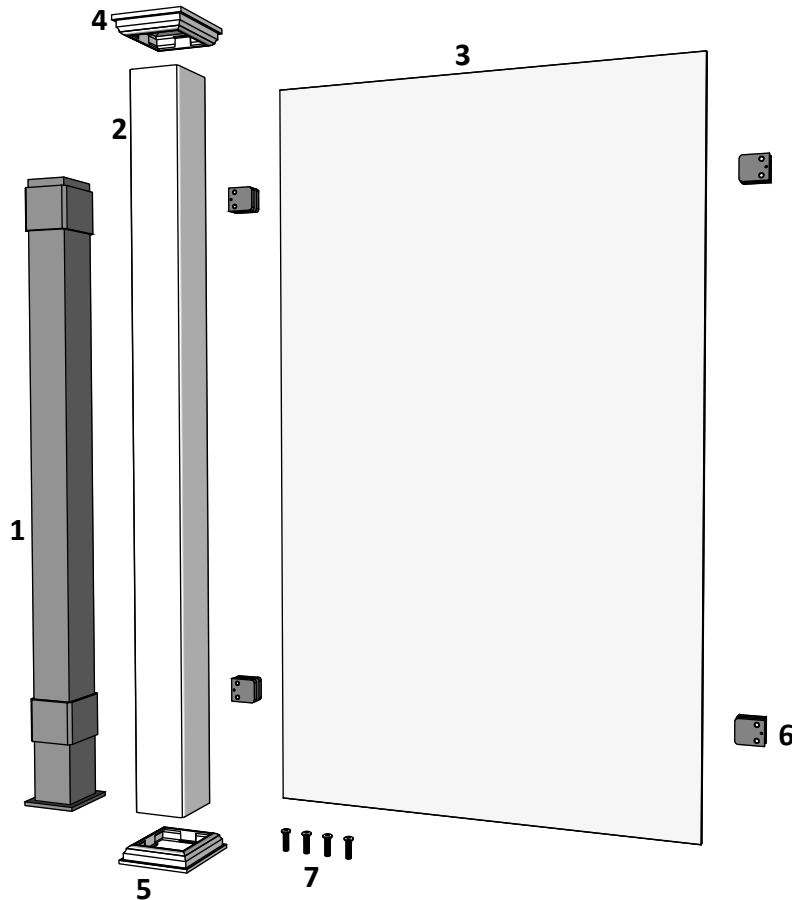
Art. No: 102337

Special



Art. No: 102338

### Component overview for pack no: 7400-7403



**1 section contains:**

- 1. Aluminium insert for post
- 1. PVC post
- 3. 16,76mm (88.2) tempered and laminated glass
- 4. New England top cap

- Art. No: See alternatives
- Art. No: 101542
- Art. No: 102500
- Art. No: 102457

- 5. Bottom cap
- 6. 4 x Glass clamp
- 7. 4 x Bolt

- Art. No: 102449
- Art. No: 102439
- Art. No: 102453



**KG-3 Utsyn 170**

[www.kystgjerdet.com](http://www.kystgjerdet.com)

Revisions

	MM/DD/YY	Notes
1	14/11/17	Sheet Production - RL
2	06/10/20	Name definition, and layout update - MS
3	10/02/21	Layout update - RL
4	--/--/--	...
5	--/--/--	...

A 03

A