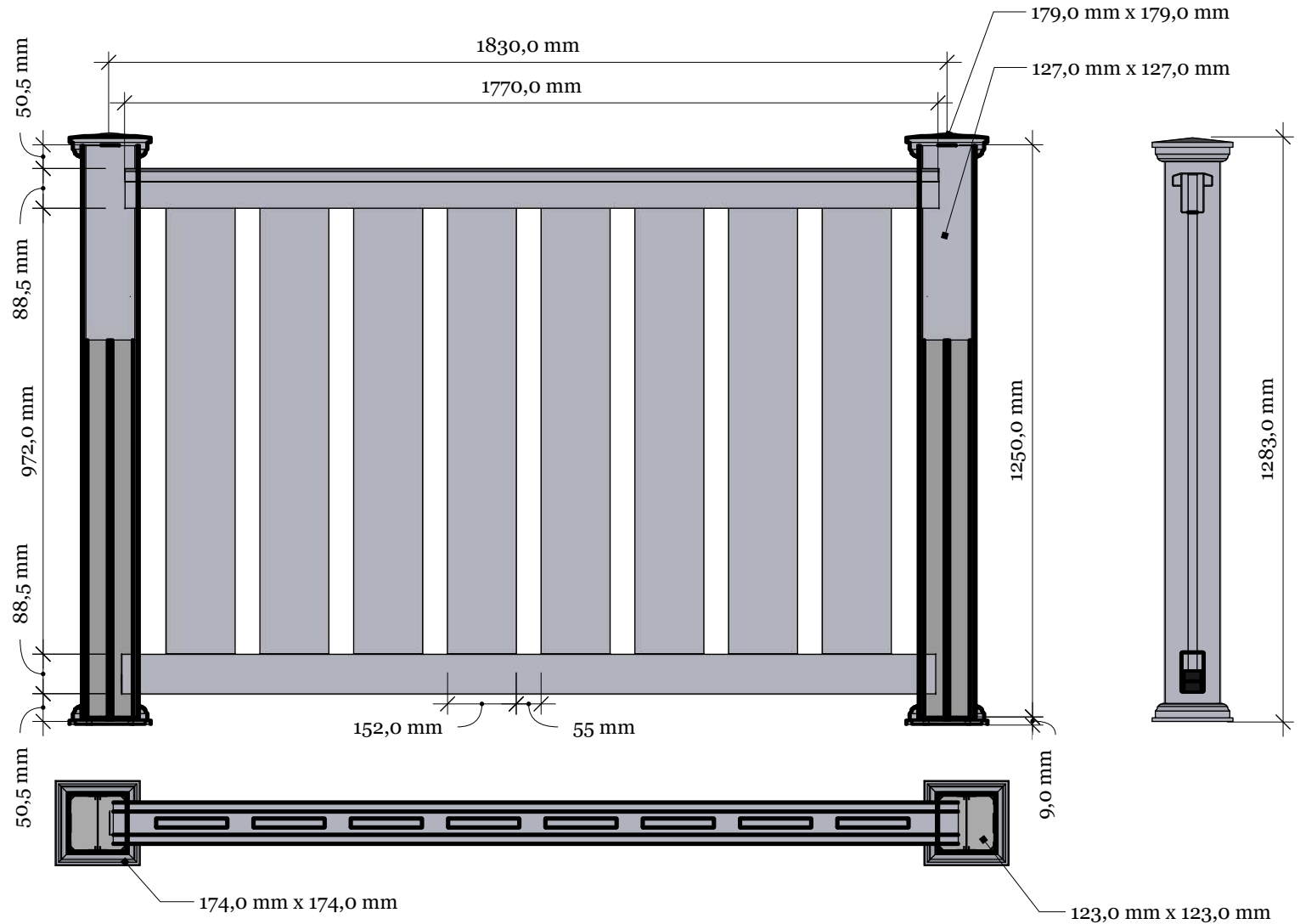
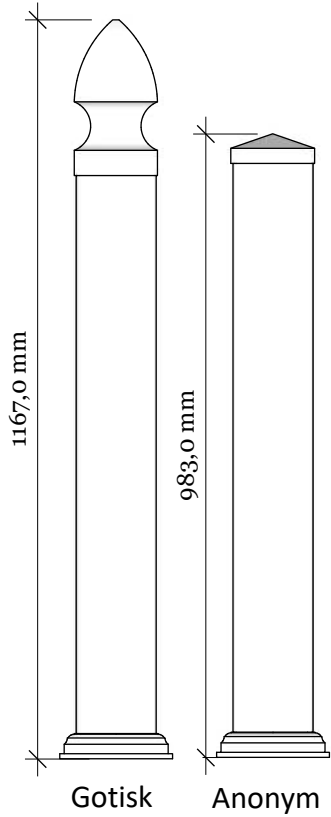


Alternative topper

FD-2G Villa 120 Grey with New England topp

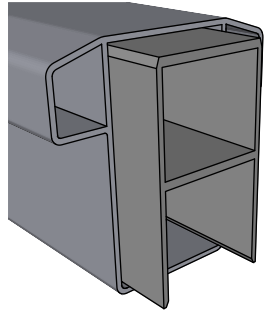


**KYSTGJERDET**  
Kvalitet fremfor kvantitet!

**FD-2 Villa Grey 120**  
[www.kystgjerdet.com](http://www.kystgjerdet.com)

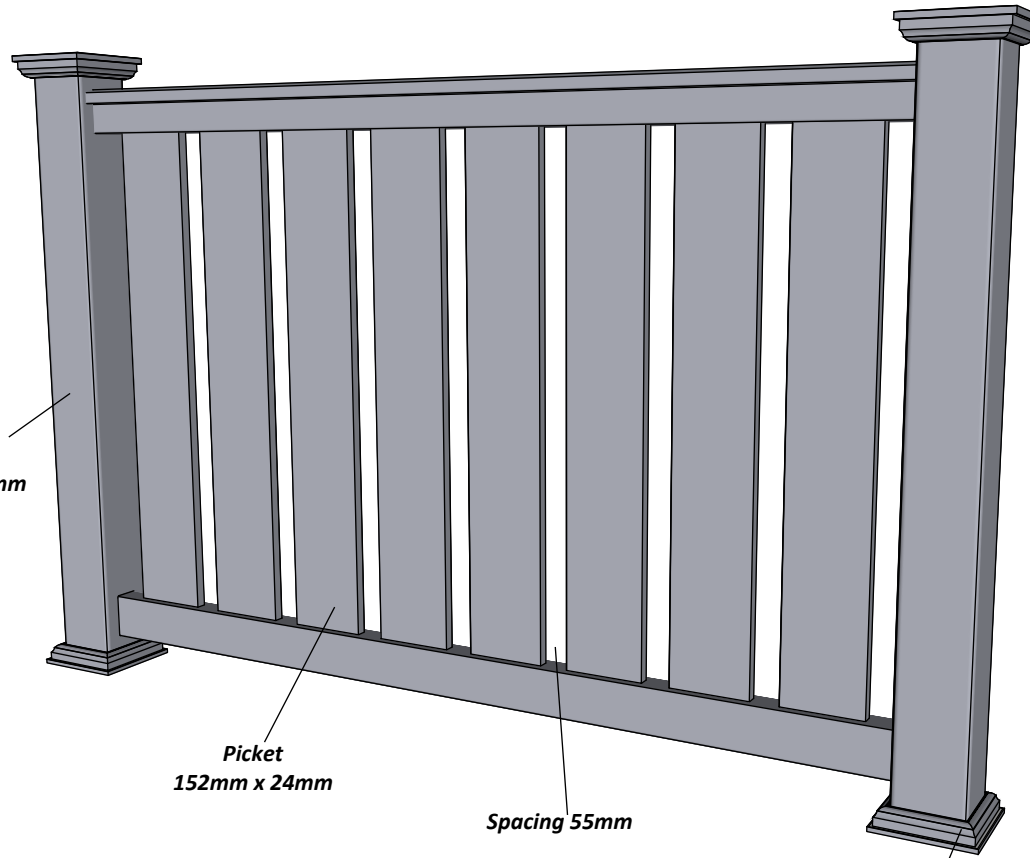
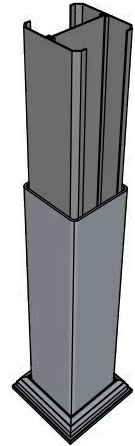
REVISJONER		
MM/DD/ÅÅ	BEMERKNINGER	
1 20/11/17	Produksjon av datablad	
2 30/09/20	Oppdatering av produktnavn + ekstra målsetting	
3 10/02/21	Layout update - RL	
4 02/02/23	Layout update - LMS	
5 --/--/--	...	

# FD-2G Villa Grey PLUS 120 railing with New England top



Top rail profile

Rigid aluminum insert in post

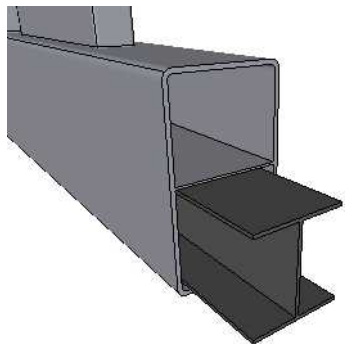


Post  
127mm x 127mm

Picket  
152mm x 24mm

Spacing 55mm

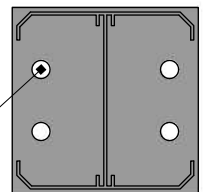
Bottom of insert is  
123mm x 123mm  
8mm thickness of alu



Aluminum profile in  
bottom rail to prevent  
deflection

Bottom cover  
174mm x 174mm.

Ø = 12mm



**KYSTGJERDET**

**FD-2G Villa Grey PLUS 120**

[www.kystgjerdet.com](http://www.kystgjerdet.com)

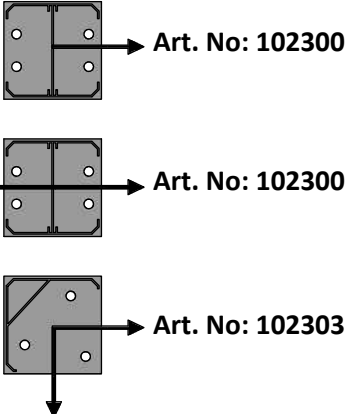
Revisions

Rev. No.	Date	Description
1	14/11/17	Sheet Production - RL
2	06/10/20	Name definition, and layout update - MS
3	10/02/21	Layout update - RL
4	___/___/___	...
5	___/___/___	...

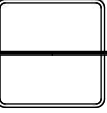
03

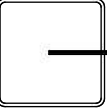
A

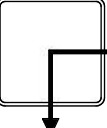
**Alt. for component 1:**




**Alt. for component 2:**

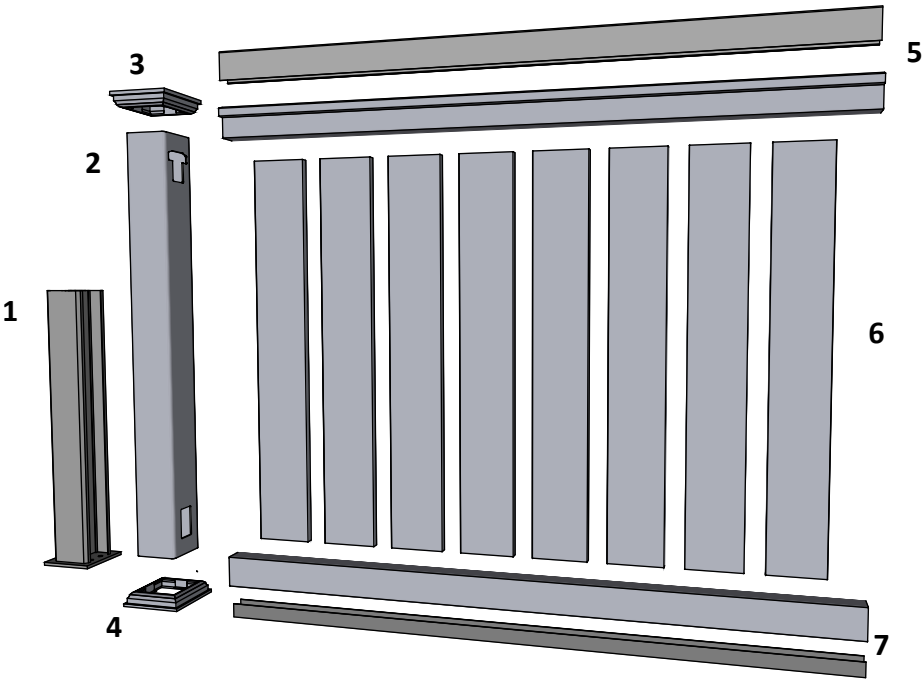
 **Line Post: Art. No: 100831**  
*For pack no: 1912*

 **End Post: Art. No: 100832**  
*For pack no: 1913*

 **Corner Post: Art. No: 100833**  
*For pack no: 1914*

 **Special Post: Art. No: 101522**  
*For pack no: 1915*

## Component overview for pack no: 1912-1915

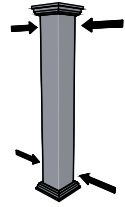


**1 full section contains:**

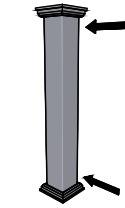
<b>1. Aluminum insert for post</b>	- Art. No: See alternatives
<b>2. PVC post</b>	- Art. No: See alternatives
<b>3. New England top (as standard)</b>	- Art. No: 102465
<b>4. Bottom cover</b>	- Art. No: 102451
<b>5. Top rail</b>	- Art. No: 100024
<b>6. 8 Pickets</b>	- Art. No: 101746
<b>7. Bottom rail with alu. liner</b>	- Art. No: 100119

**Additional posts can be purchased separately:**

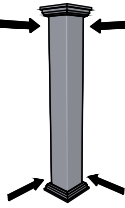
**Line Post - Pack no: 8631**



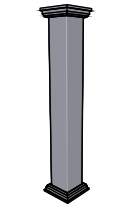
**End Post - Pack no: 8632**



**Corner Post - Pack no: 8633**



**Special Post - Pack no: 8823**



Revisions		
1	14/11/17	Sheet Production - RL
2	06/10/20	Name definition, and layout update - MS
3	10/02/21	Layout update - RL
4	02/02/23	Layout update - LMS
5	---/--/--	...